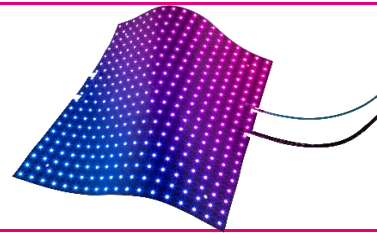


ledTec.flex | wallpaper | p32 | 2500lm | ip20

The ledTec.flex | display | p32 is a thin, flexible LED display with 18 x 18 pixels (576 x 576mm) and a 32.0mm pixel pitch. The foil has a brightness of 2500 lumens per sqm and is suitable for indoor wall and ceiling applications with high lumen output with best performance on electronic design and light weight requirements. Multiple modules can be cascaded to realize large screens.



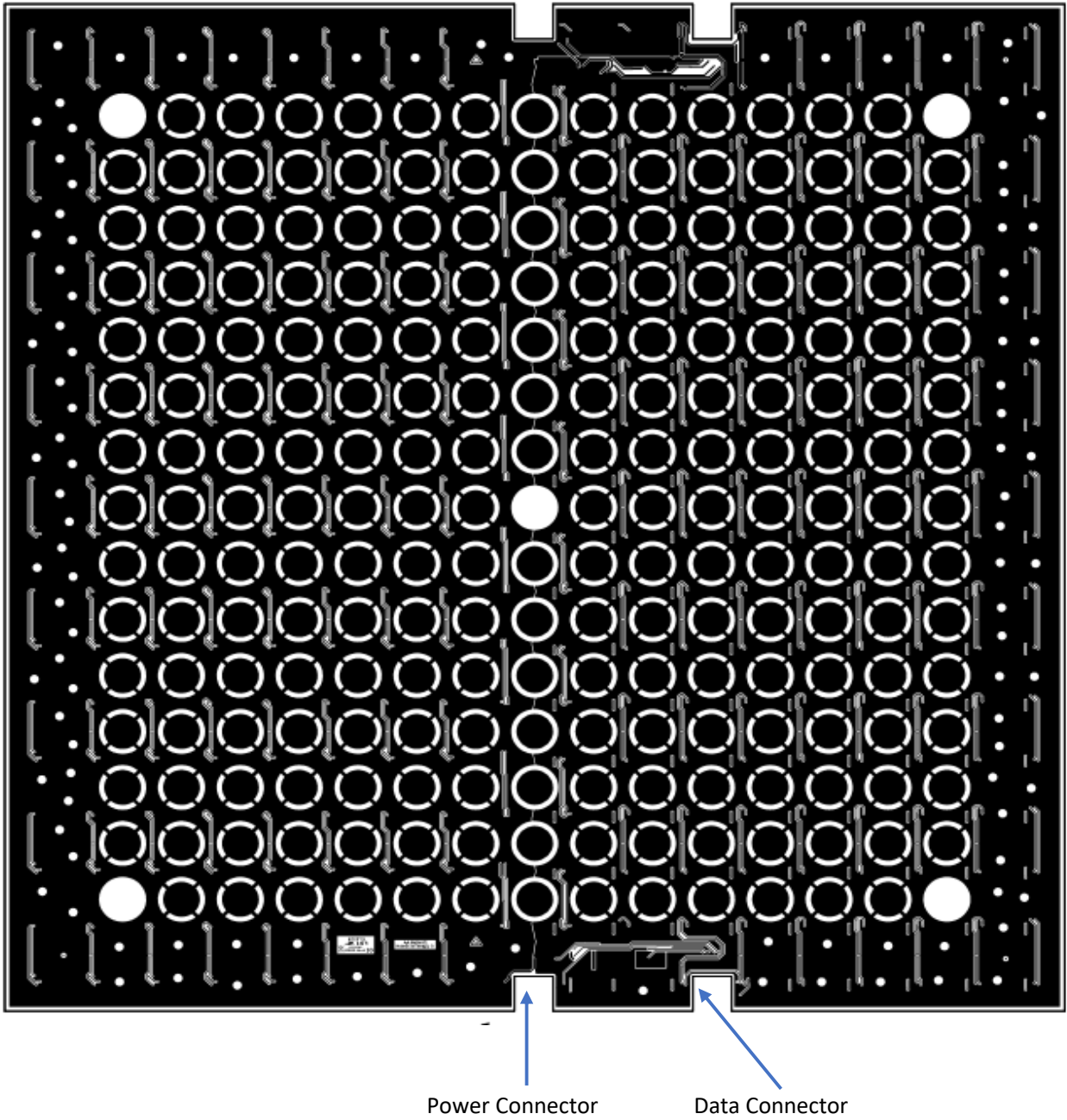
LED Pitch	32mm
Light Source (LEDs)	324 pixels per foil / 972 pixels per sqm. RGB SMD LED, individually controllable
Luminous flux	2500lm/sqm
Color point white (k)	9000K
Surface	Polyimide (PI)
Pixel per Tile	20(horizontal) x 18(vertical)
DimensionsLxWxH	576mm x 576mm x 6mm (connector height)
Color of the surface	deep black
LED colors	RGB
Colour resolution	16.7 Million colors / 8bit per color
LED PWM frequency	6.9 kHz
Frame rate	max 60Hz
Beam Angle	120°
Ambient temperature during operation	min 0°C / max 50°C
Storage temperature	min -20°C / max 80°C
Lumen maintenance	L50 @ 25°C -50.000hrs
Bending radius all directions	800mm
Mounting	Velcro. Optional additional safety via mounting holes in corners and in center
Cable interface	Molex Microfit. 4-pin for data, 6-pin for power
Weight	270g per foil
Environment	indoor IP20
Humidity	0-90%, non-condensing
Approbation	CE, RoHS, REACH

Electrical Specifications

Operating voltage	12V
Power Consumption (typical)	20W per foil
Power Consumption (max)	40W per foil

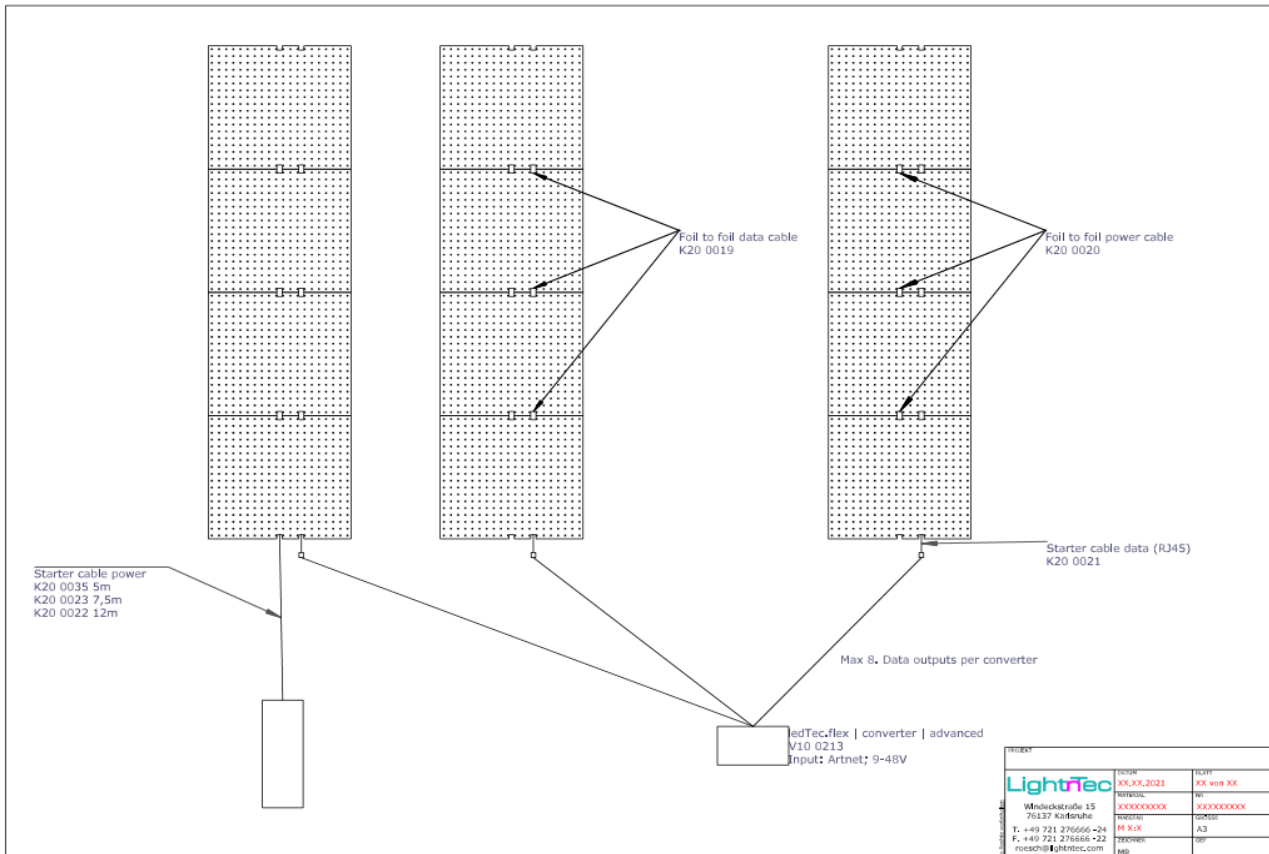
System Specifications

Power Supply	AC110V/230V-100 up to 600W/12V
Control	ArtNet
Converter	ledTec.flex converter advanced v1.0
Configuration	via web interface of converter



Velcro Mounting





ledTec.flex | wallpaper | rgb | p32 | 2500ln | ip20

Ordering

Fixtures

Item Code	Description	Data
V10 0019	ledTec.flex display p5 3000 black ip65	3000 NIT / pixel pitch 5mm, IP65
V10 0085	ledTec.flex banner p16 4000 deep black ip66	4000 NIT / pixel pitch 16mm, IP66
V100282	ledTec.flex wallpaper p32 2500 black ip20	2500 lm/qm / pixel pitch 32mm, IP20

Mounting Accessories

V10 0218	ledTec.flex velcro wallpaper black soft & hook per Unit	2,5m length x 25mm width
V10 0219	ledTec.flex velcro wallpaper white soft & hook per Unit	2,5m length x 25mm width
V10 0017	ledTec.flex velcro display black soft & hook per Unit	3,5m length x 25mm width
R10 0018	ledTec.flex velcro black soft roll 25m	25m length x 25mm width
R10 0019	ledTec.flex velcro white soft roll 25m	25m length x 25mm width
R10 0050	ledTec.flex velcro black hook roll 25m	25m length x 25mm width
R10 0051	ledTec.flex velcro white hook roll 25m	25m length x 25mm width

Cables & Connector

V100250	ledTec.flex cable f2f mf 4pin 48.5mm	P32, Data
V100251	ledTec.flex cable f2f mf 6pin 48.5mm	P32, Power
V100252	ledTec.flex cable starter2f mf-rj45 4pin 0.3m	P32, Data
V100253	ledTec.flex cable starter2f mf 6pin 12m	P32, Power Starter Cable
V100254	ledTec.flex cable starter2f mf 6pin 7m	P32, Power Starter Cable
R100025	ledTec.flex data cable CAT5e 5m	Rj45
R100026	ledTec.flex data cable CAT5e 10m	Rj45
R100027	ledTec.flex data cable CAT5e 20m	Rj45

Power Supply

V100240	ledTec.flex power supply 500W/5V	IP20
V100277	ledTec.flex power supply AC 480W/12V IP66	IP66

Converter - Controller

V100216	ledTec.flex controller display	Player with 1 HDMI mini out (Terminal), video out: Wifi
V100217	ledTec.flex controller display software lizence 12 mounts	Software
V100213	ledTec.flex converter advanced v1.0	ARTNet in / LPIX2 out
V100272	ledTec.flex converter hdmi-artnet	HDMI to Artnet