

ledTec.flex | converter | hdmi

This HDMI to ArtNet Converter is a software operated device that converts video to ArtNet in real time. The converter allows you to import and take over a pixel mapping from another HDMI device or media server. The software inside allows video scraping and pixel mapping setup.

A built-in real-time clock triggers, including astronomical clock "sunrise" and "sunset" events. Each pixel has a position in the display and an address in the ArtNet universe.



Data Interfaces

Video Input	Input HDMI 2.0
Input video resolutions	Support (4K) up to 4096x2160 pixels
Output	Gigabit Ethernet
Data output protocols	Artnet, via standard Ethernet
Frame rate	configurable in 1Hz steps
Operation	24/7 house
Maintenance	Remote firmware update possible via web interface

Configuration options (via web interface)

Brightness diming	min. 0%, max 100% to ArtNet converter nodes
Options	for crop, scale, rotate and mirror of video content
Test mode	by power
automatic discovery	of connected ArtNet converter nodes
Protection	via Web interface with login by user name and password

Power supply

Power supply options	AC power input connector, cable 3m
Operating voltage	100-240V AC
Power Consumption (normal operation)	typ. 40W, max. 50W
Power management	Automatic re-boot after interruption of power supply

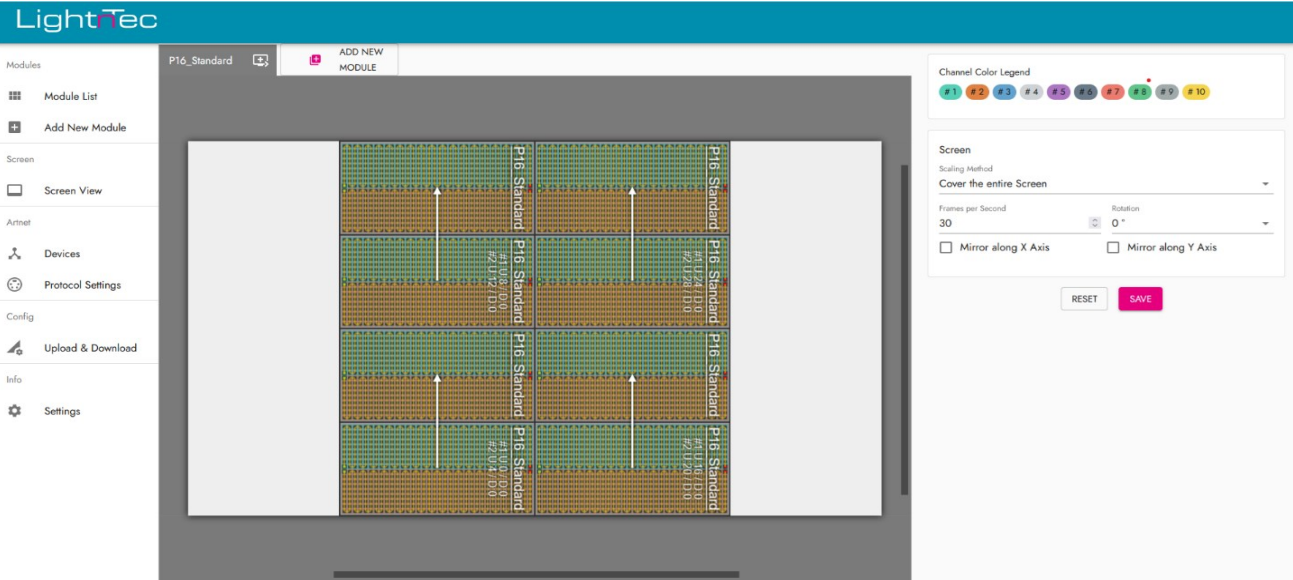
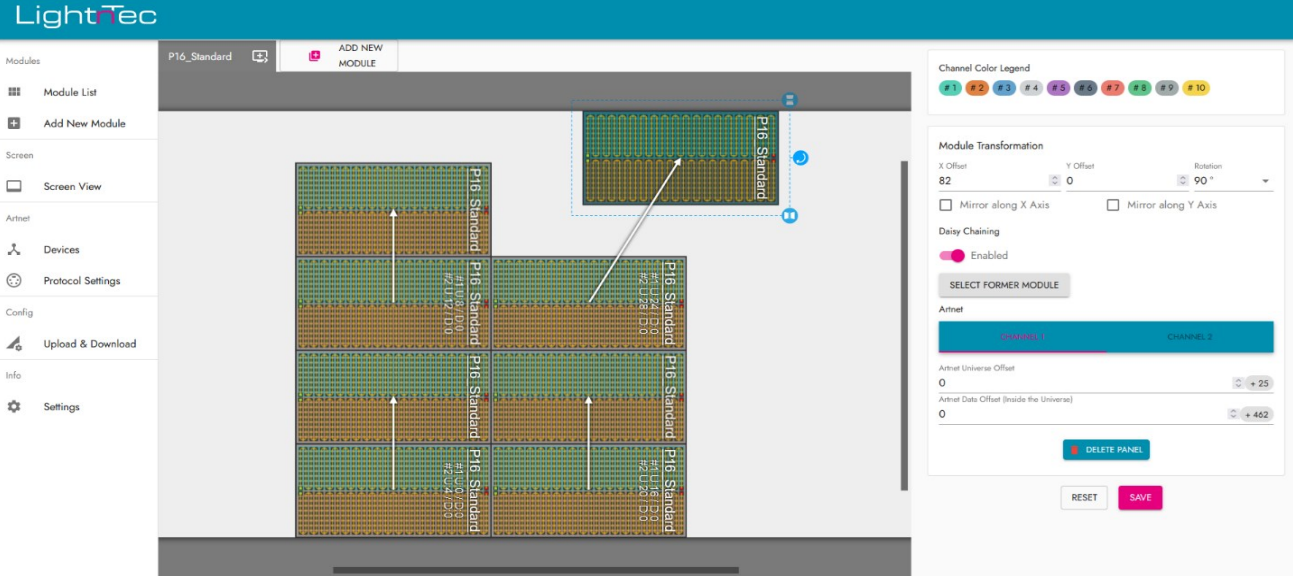
Mechanical

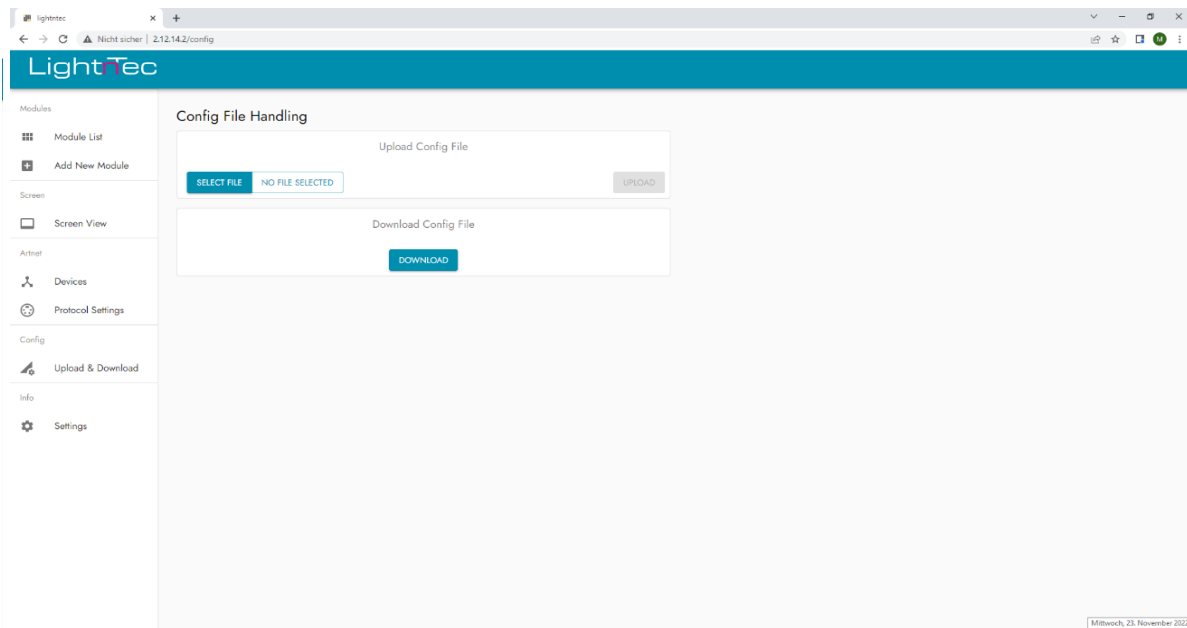
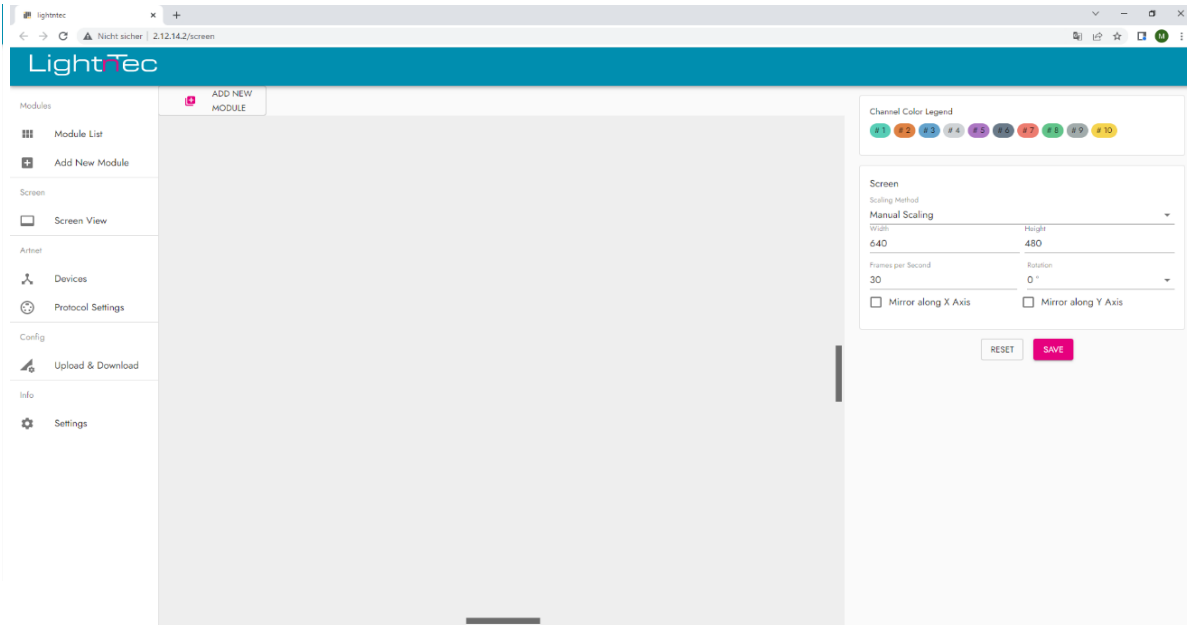
Dimensions LxWxH	250mm x 200mm x 78.5mm
Mounting	VESA-bracket (75/100 mm)
Weight	1215g
Housing	Robust steel black

Environmental

Operating Temperature	0°C up to 50°C
Storage Temperature	-20°C up to 70°C
Humidity	0-90%, non-condensing
Environment	IP20, indoor
Standards and regulations	CE, RoHS, Reach

ledTec.flex | converter | hdmi webinterface





ledTec.flex | converter | hdmi

Ordering

Fixtures

Item Code	Description	Data
V10 0019	ledTec.flex display p5 3000 black ip65	3000 NIT / pixel pitch 5mm, IP65
V10 0085	ledTec.flex banner p16 4000 deep black ip66	4000 NIT / pixel pitch 16mm, IP66
V10 0233	ledTec.flex wallpaper p32 2500 black ip20	2500 lm/qm / pixel pitch 32mm, IP20

Mounting Accessories

V10 0017	ledTec.flex velcro display black soft & hook per Unit	3,5m length x 25mm width
R10 0050	ledTec.flex velcro black hook roll 25m	25m length x 25mm width
R10 0051	ledTec.flex velcro white hook roll 25m	25m length x 25mm width

Cables & Connector

V100250	ledTec.flex cable f2f mf 4pin 48.5mm	P32, Data
V100251	ledTec.flex cable f2f mf 6pin 48.5mm	P32, Power
V100252	ledTec.flex cable starter2f mf-rj45 4pin 0.3m	P32, Data
V100253	ledTec.flex cable starter2f mf 6pin 12m	P32, Power Starter Cable
V100254	ledTec.flex cable starter2f mf 6pin 7m	P32, Power Starter Cable
R100025	ledTec.flex data cable CAT5e 5m	Rj45
R100026	ledTec.flex data cable CAT5e 10m	Rj45
R100027	ledTec.flex data cable CAT5e 20m	Rj45

Power Supply

V100240	ledTec.flex power supply 500W/5V	IP20
V100277	ledTec.flex power supply AC 480W/12V IP66	IP66

Converter - Controller

V100216	ledTec.flex controller display	Player with 1 HDMI mini out (Terminal), video out: Wifi
V100217	ledTec.flex controller display software lizence 12 mounts	Software
V100213	ledTec.flex converter advanced v1.0	ARTNet in / LPIX2&3 out
V100272	ledTec.flex converter hdmi-artnet	HDMI to Artnet