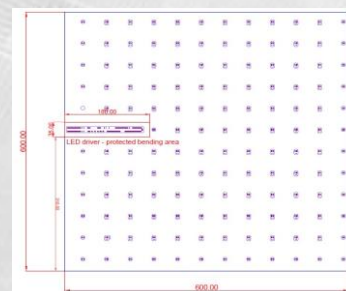
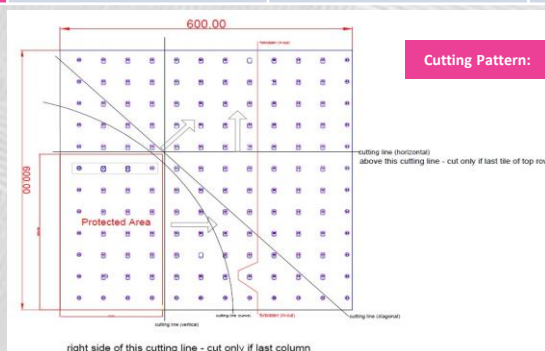


# DataSheet #DigitalVideoWallpaper:

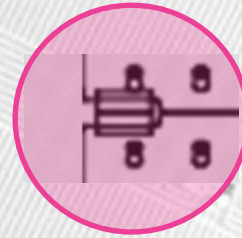
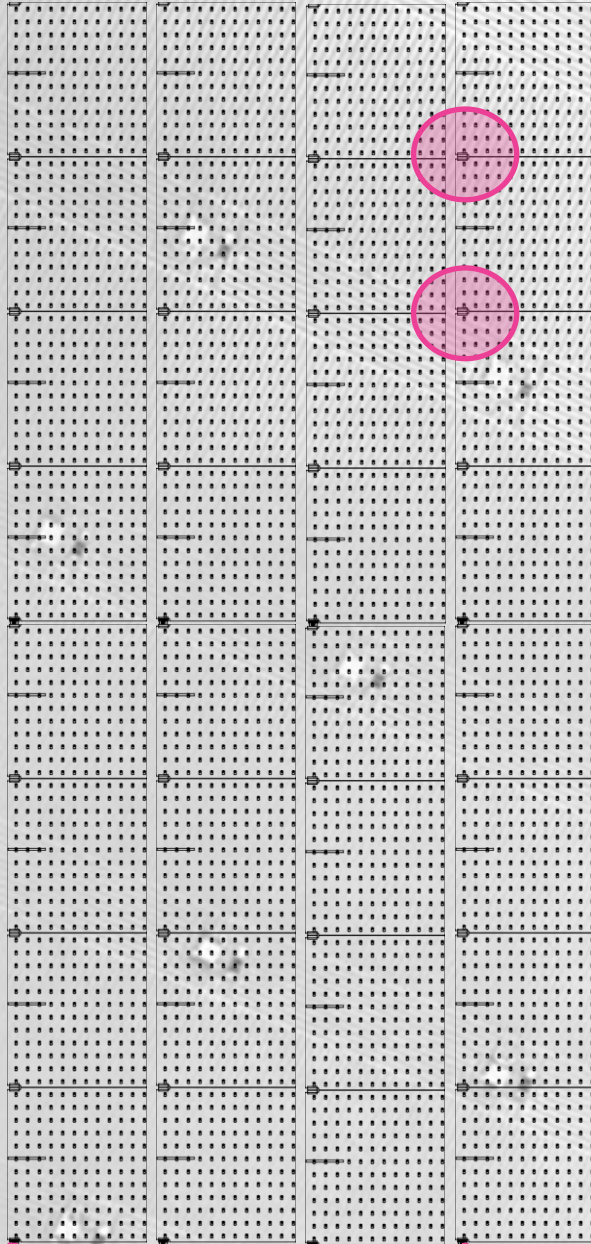
Technical datasheet	MSM 50/1600 transparent	MSM 50/1600 black	MSM 50/1600 white	MSM 50/1600 customized logo
Ordering number	PEN: Z200008	PI: Z200007 Outdoor/PI: Z200010	PI: Z200006 Outdoor/PI: Z200009	PI: Z200012 Outdoor/PI: Z200011
Pitch Configuration	1R1G1B SMD	1R1G1B SMD	1R1G1B SMD	1R1G1B SMD
Foil Substrate / Material	PEN (Polyethylenphthalat)	PI (Polyimide), black (no gloss)	PI (Polyimide) white	PI (Polyimide) customized logo (cross foils)
Surface color	transparent			
Pixel Pitch	50 mm	50 mm	50 mm	50 mm
Pixel per tile (hor, vert)	12x12	12x12	12x12	12x12
Density (dots / m <sup>2</sup> )	400 dots / m <sup>2</sup>	400 dots / m <sup>2</sup>	400 dots / m <sup>2</sup>	400 dots / m <sup>2</sup>
Brightness	1600 nits video mode	1600 nits video mode	1600 nits video mode	1600 nits video mode
Dimensions of Tile / Segment (hor; vert)	600 x 600 mm	600 x 600 mm	600 x 600 mm	600 x 600 mm
Bending radius - x direction (left to right) incl. LED Driver	1m	1m	1m	1m
Bending radius - y direction (top - bottom) - incl. LED Driver	0.3m	0.3m	0.3m	0.3m
Bending radius - all direction outside see drawing below LED Driver protected bending area	0.1m	0.1m	0.1m	0.1m
Layout	non symmetric	non symmetric	non symmetric	non symmetric
Usage	Indoor only	Indoor Outdoor optional (PI)	Indoor Outdoor optional (PI)	Indoor Outdoor optional (PI)
Max power consumption	85 W / m <sup>2</sup>	85 W / m <sup>2</sup>	85 W / m <sup>2</sup>	85 W / m <sup>2</sup>
Average power consumption	43 W / m <sup>2</sup>	43 W / m <sup>2</sup>	43 W / m <sup>2</sup>	43 W / m <sup>2</sup>
Efficiency				
Weight / m <sup>2</sup>	250 g / m <sup>2</sup>	270 g / m <sup>2</sup>	270 g / m <sup>2</sup>	280 g / m <sup>2</sup>
Input Voltage	AC 230 V / 50 Hz and AC 110 V / 60 Hz	AC 230 V / 50 Hz and AC 110 V / 60 Hz	AC 230 V / 50 Hz and AC 110 V / 60 Hz	AC 230 V / 50 Hz and AC 110 V / 60 Hz
Color point	6500K	6500K	6500K	6500K
Colors	24 bit 16,7 Mio.	24 bit 16,7 Mio.	24 bit 16,7 Mio.	24 bit 16,7 Mio.
Frame rate (Hz)	30 Hz	30 Hz	30 Hz	30 Hz
Refresh rate	4000 Hz	4000 Hz	4000 Hz	4000 Hz
Resolution	12x12	12x12	12x12	12x12
Maximum number of connected tiles @48V	10 (6 m)	10 (6 m)	10 (6 m)	10 (6 m)
Light transmittance	40% in transparent mode	non	non	non
IP rating	not applicable	IP 65 like - optional, mandatory for outdoor	IP 65 like - optional, mandatory for outdoor	IP 65 like - optional, mandatory for outdoor
Video input	Media Player 1-3	Media Player 1-3	Media Player 1-3	Media Player 1-3
Supply voltage	12-48 V	12-48 V	12-48 V	12-48 V
Operating temperature	10°C-40°C	10°C-40°C	10°C-40°C	10°C-40°C
Storage temperature	-20°C - +70°C	-20°C - +70°C	-20°C - +70°C	-20°C - +70°C
LEDlifetime	60.000h (video mode, 50% brightness)	60.000h (video mode, 50% brightness)	60.000h (video mode, 50% brightness)	60.000h (video mode, 50% brightness)
Hor. Viewing angle	>115° (@50% brightness)	>115° (@50% brightness)	>115° (@50% brightness)	>115° (@50% brightness)
Hor. Viewing angle	>115° (@50% brightness)	>115° (@50% brightness)	>115° (@50% brightness)	>115° (@50% brightness)
Weight / tile (g)	90	97,2	97,2	100,8
Serviceability	front	front	front	front
Warranty	2 years	2 years	2 years	2 years
Extended Warranty	up to 3-5 years	up to 3-5 years	up to 3-5 years	up to 3-5 years
Certifications	Q1 2018: CE, RoHS, WEE, REACH Q3 2018: UL, FCC class A	Q1 2018: CE, RoHS, WEE, REACH Q3 2018: UL, FCC class A	Q1 2018: CE, RoHS, WEE, REACH Q3 2018: UL, FCC class A	Q1 2018: CE, RoHS, WEE, REACH Q3 2018: UL, FCC class A
Availability samples	Q4 2017	Q4 2017	Q4 2017	Q4 2017
Availability (full production)	Q1 2018	Q1 2018	Q1 2018	Q1 2018
Leadtime	8weeks	10weeks	10weeks	14weeks



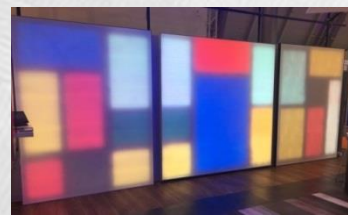
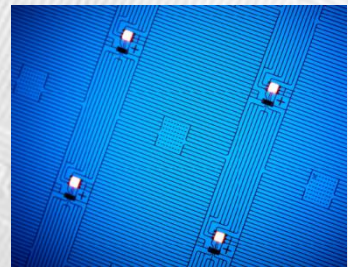
P50-1600

LightnTec

# System-Architecture:



„Smart Light“  
Segment  
Connector



#DigitalVideoWallpaper

# DataSheet #DigitalVideoBanner:

Technical datasheet	MSM 37-5000 black
Ordering number	PI: Z300001 Outdoor/PI: Z300010
Pitch Configuration	1R1G1B SMD
Foil Substrate / Material	PI (Polyimide),
Surface color	black (no gloss)
Pixel Pitch	37.5mm
Pixel per tile (hor, vert)	15 x 16
Density (dots / m <sup>2</sup> )	720 dots / m <sup>2</sup>
Brightness	5000 nits video mode
Dimensions of	
Tile / Segment (hor; vert)	600 x 550 mm
Bending radius - x direction (left to right) incl. LED Driver	1m
Bending radius - y direction (top - bottom) - incl. LED Driver	0.3m
Bending radius - all direction outside see drawing below	
LED Driver protected bending area	0.1m
Layout	symetric
Usage	Indoor Outdoor optional (PI)
Max power consumption	450 W / m <sup>2</sup>
Average power consumption	250 W / m <sup>2</sup>
Efficiency	
Weight / m <sup>2</sup>	400g / m <sup>2</sup>
Input Voltage	AC 230 V / 50 Hz and AC 110 V / 60 Hz
Color point	6500K
Colors	24 bit 16,7 Mio.
Frame rate (Hz)	30 Hz
Refresh rate	4000 Hz
Resolution	15 x 16
Maximum number of connected tiles @48V	10 (6 m)
Light transmittance	non
IP rating	IP 65 like - optional, mandatory for outdoor
Video input	Media Player 1-3
Supply voltage	12-48 V
Operating temperature	-10°C-80°C (upon 60° linear reduction of luminous flux)
Storage temperature	-20°C - +70°C
LEDlifetime	60.000h (video mode, 50% brightness)
Hor. Viewing angle	>115° (@50% brightness)
Hor. Viewing angle	>115° (@50% brightness)
Weight / tile (g)	133
Serviceability	front
Warranty	2 years
Extended Warranty	up to 3-5 years
Certifications	Q1 2018: CE, RoHS, WEE, REACH Q3 2018: UL, FCC class A
Availability samples	Q4 2019
Availability (full production)	Q1 2020
Leadtime	18weeks



#DigitalVideoBanner